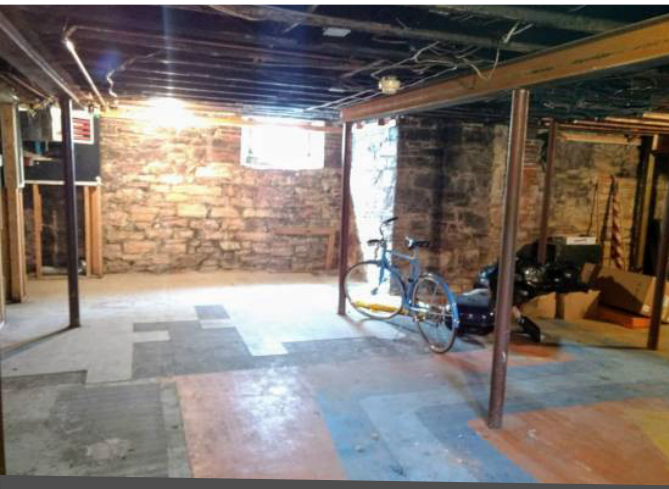


FOR LEASE AVAILABLE IMMEDIATELY



BURLINGTON, VERMONT

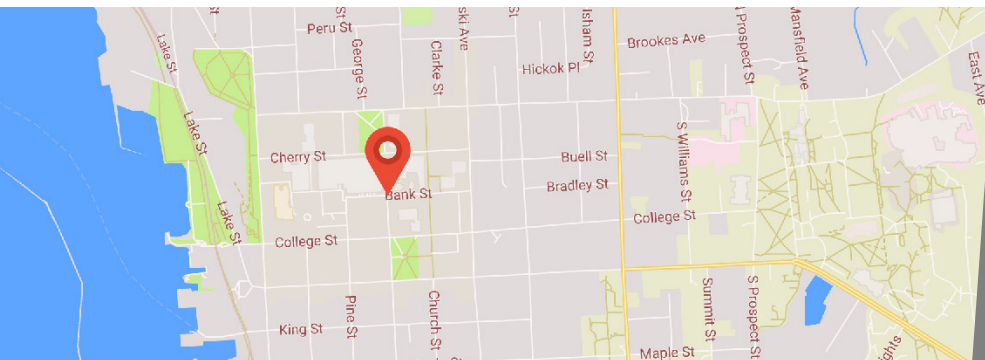
BANK STREET LOWER LEVEL

LOWER LEVEL RETAIL SPACE AVAILABLE IN DOWNTOWN BURLINGTON

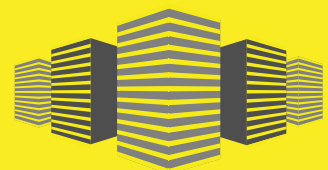
Lower level retail space available. Directly across the street from the new City Center development that is currently under construction. Great spot for a small cafe, coffee shop or make it your own. Fit-up negotiable. \$1000/month, utilities included.

\$1,000/MO
INCLUDES UTILITIES

ZANDRA L ANAND
802.734.5783
ZANDRA@YELLOWSIGNVT.COM



DISCLAIMER: INFORMATION CONTAINED HEREIN IS BELIEVED TO BE ACCURATE, BUT IS NOT WARRANTED.



YELLOW SIGN
COMMERCIAL

18 DOVER ST • SOUTH BURLINGTON • VT • 05403

YELLOWSIGNVT.COM